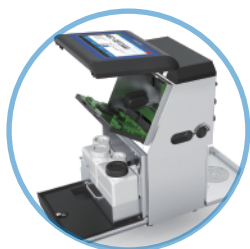
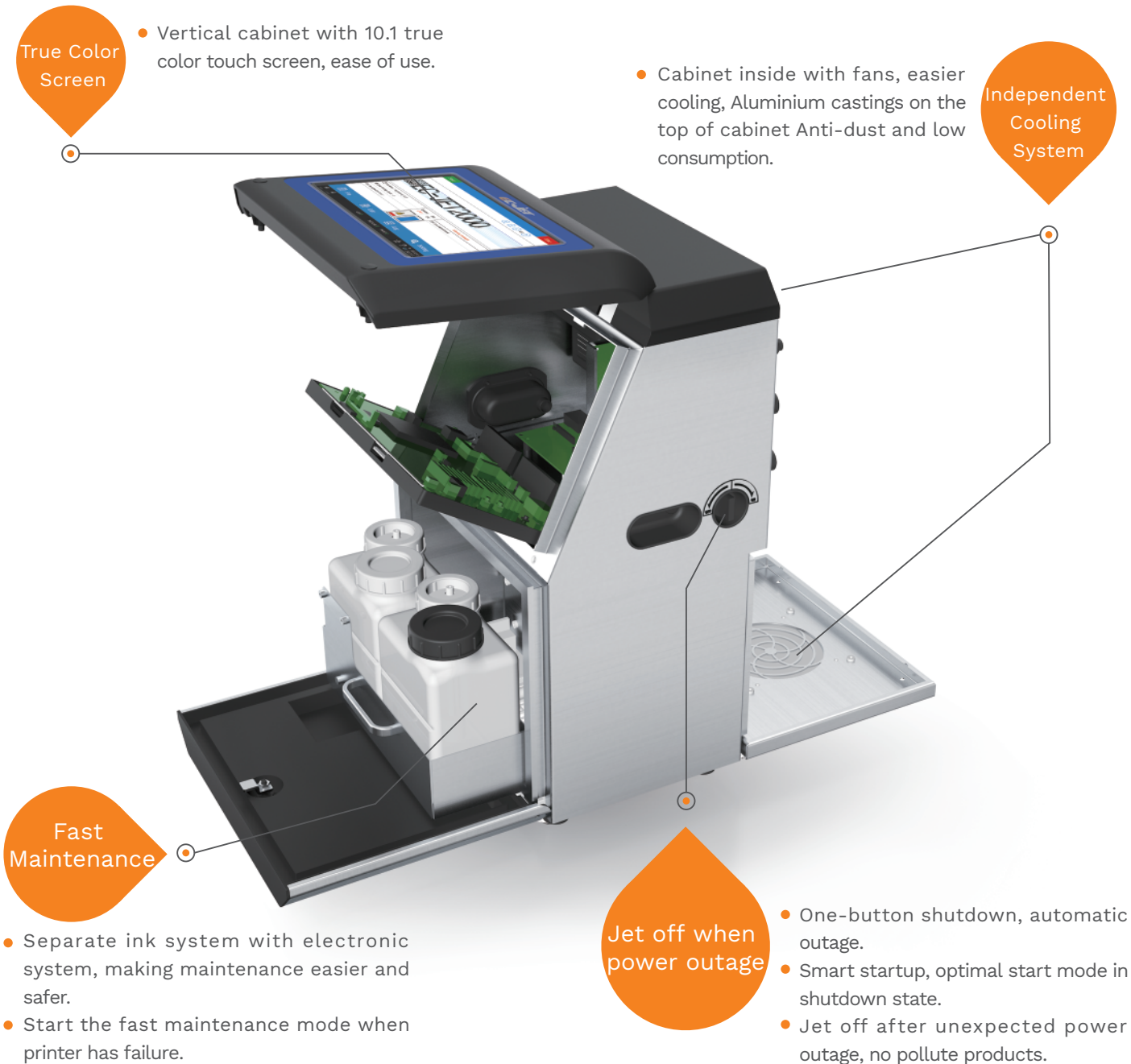




# **EC-JET2000**

Continuous Inkjet Printer



**Unique Three-door Design**

Maintenance door, consumable door and electronic door



**New Ink System Design**

Reduce electromagnetic interference, low consumption



**Intelligent startup-shutdown**

One button start, automatically choose different startup mode according to last shutdown. One button shutdown, it can preset whether to automatically cut off or not, and when to cut off the power.



### Reliable Printing

Completely new printhead design ensures printing more stable and reliable maintenance



### Stable Performance

Stable jet adapt to the dynamic applications



### Modular Design

Pretty appearance  
stable structure



### USB Data Transmission

- Software upgrade
- Data backup, import and export by U-disk



• Photocell/Shaft Encoder

• RS232

• Alarm output

### Remote Control

- LAN remote control operation



### Economical & Environmental, and Cost-effective

Ultra high speed at  
380 meters per minute  
(1246ft per minute)  
High efficiency  
saves up to 20%  
on operating costs



### Fast Editing

Support fast on-line editing  
switching, and  
previewing print data



### Barcode Printing

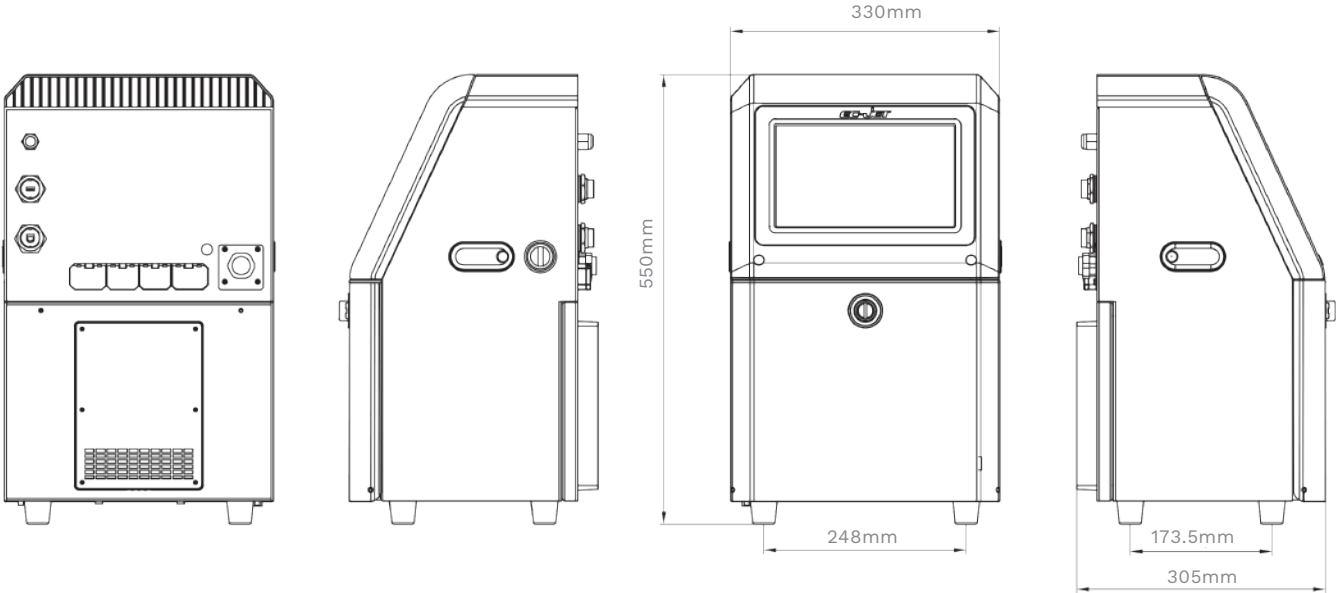
1D barcode and 2D barcode  
printing capability  
On-screen logo  
creation and editing

## More...

- Character bolding horizontally and vertically  
Dot bolding
- Completely new printing control program  
make printing more beautiful
- Recycle detects automatically, easy to  
find out the jet offset in time
- Flexible date and time format  
automatically date calculating function



# Dimensions



# Application



# Excellent EC-JET, Intelligent Choice

Model	EC-JET2000
Nozzle type	60μm, 40μm, 50μm, 70μm (Optional)
Max print speed(1 line)	360m/min(Dot pitch 0.4mm)
Character	90°, 180°, 270°revolve available
Message capacity	Maximum 4GB
Print message height	1.0-20mm
Print lines	1-5 lines
Max message length	2048 Characters (7×5 dots matrix)
Languages	Chinese, Traditional Chinese, English, Italian, German, Portuguese, Persian, Vietnamese, Polish, Russian, Arabic (update more languages as needed)
Maximum print dots in a row	34dots
High precision screen	10.1 True color hd touch screen
Operation system	EC-JET "SEQ" Operation System
Interface	Shaft encoder, photocell, external alarm, usb, ethernet, rs-232 communication
Usb data transumission	Support software upgrade, data backup, import and export with u disk
Remote control	LAN remote control operation
Material	Engineering plastics + SUS304 stainless steel cabinet
Working temperature	5-45°C
Relative humidity	Max 90% (No Condensation)
Protection grade	IP55
Power supply	AC115V/230V, 50/60Hz

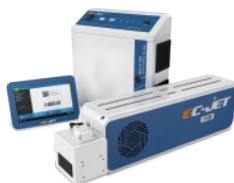
\*Please consult EC-JET for more information  
5\*5 dots Single line



High Resolution Inkjet Printer



Large Character Inkjet Printer



Laser Coding System



Handheld High Resolution Inkjet Printer



Consumable



## Guangzhou EC-PACK Packaging Equipment Co., Ltd.

Address: 16 Huang Qi Shan Road, Yong He Economic Zone, GETDD, 511356, Guangzhou, Guangdong Province, China.  
Tel: +86 20 8220 9518 Fax: +86 20 8220 9511  
Web: [www.ec-jet.com](http://www.ec-jet.com)  
E-mail: [market@ec-jet.com](mailto:market@ec-jet.com)

## Pharmapack Technologies Corporation

Address: 16 Huang Qi Shan Road, Yong He Economic Zone, GETDD, 511356, Guangzhou, Guangdong Province, China.  
Tel: +86 20 8221 5907 Fax: +86 20 8221 3367  
Web: [www.pppharmapack.cn](http://www.pppharmapack.cn)  
E-mail: [market@pppharmapack.com](mailto:market@pppharmapack.com)

## Pharmapack Europe S.R.L.

Address: Via Molino Rosso 10F,  
40026 Imola (BO) , Italy  
Tel: +39 054 218 903 15  
Fax: +39 054 218 903 14

## Pharmapack North America Corporation

Address: 1850 S Carlos Ave, Bldg15, Unite 2,  
Ontario, CA 91761, USA  
Tel: +1 909 390 1888  
Fax: +1 909 390 5388

## Pharmapack Technologies (India) Private Limited

Address: No.206 Srinivasa Towers, Beside ITC  
Kakatiya Hotel, Begumpet, Hyderabad, India  
Tel: +91 406 678 9888